

## One Click Trading Level2 Plugin: General information

While trading on risky volatile markets one has to react promptly to all the changes and unpredictable price movements. To ease the process of an order management Soft- FX is pleased to introduce a new tool making it possible to complete trades with higher speed and greater accuracy than ever before - **One Click Trading Level2 Plugin**.

**One Click Trading Level2 Plugin** is a special tool made up of three components:

- a visual component for Depth of Market indication as well as for quick and accurate order placement;
- an Expert Advisor to launch the Plugin;
- a set of mql files with the API to access the Depth of Market (OCTL2 Level2) including a sample advisor implementing on-chart Level2 histogram (FdkLevel2.mq\*, FdkLevel2Histogram.mq4 in MetaTrader4\MQL4\Experts), a sample indicator implementing on-chart Level2 histogram (FdkLevel2Histogram.mq4 in MetaTrader4\MQL4\Indicators) and a sample script implementing on-chart Level2 histogram (FdkLevel2Histogram.mq4 in MetaTrader4\MQL4\Scripts).

The plugin is aimed to simplify trading operations in MT4. **One Click Trading Level2 Plugin** enables a trader to place an order by just a single click that allows capturing the most desirable price. **One Click Trading Level2 Plugin** provides all the necessary features for order management:

Place Sell/Buy orders with one click

Close orders with one click

Set order volume

Place pending orders

Set Stop Loss and Take Profit values in pips

Market Depth (Level 2) with market prices and volumes

Volume-weighted average price (VWAP)

Enhanced positions/account info

**One Click Trading Level2 Plugin** is fully functioning at the MT4 terminals of the following brokerage companies: **FXOpen, RVD, PIG, BTC, NetStock**.

### Software requirements:

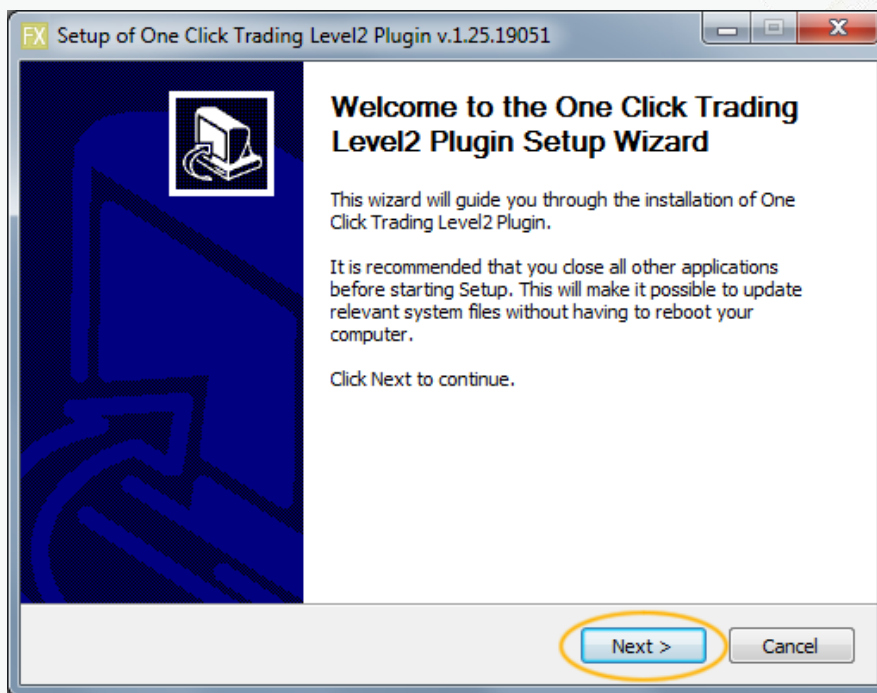
- MT Terminals:
  - MT4 Terminal v.600+
- OS's:
  - Windows XP SP3 (32-bit or 64-bit)
  - Windows Server 2003 (32-bit or 64-bit)
  - Windows Server 2003 R2 (32-bit or 64-bit)
  - Windows Vista (32-bit or 64-bit)

- Windows Server 2008 (64-bit)
  - Windows 7 (32-bit or 64-bit)
  - Windows Server 2008 R2 (64-bit)
  - Windows 8 (32-bit or 64-bit)
  - Windows Server 2012 (64-bit)
  - Windows 8.1 (32-bit or 64-bit)
  - Windows Server 2012 R2 (64-bit)
- .NET 4.0
  - VC++ Redistributable for Visual Studio 2012 x86
  - VC++ Redistributable for Visual Studio 2012 x64

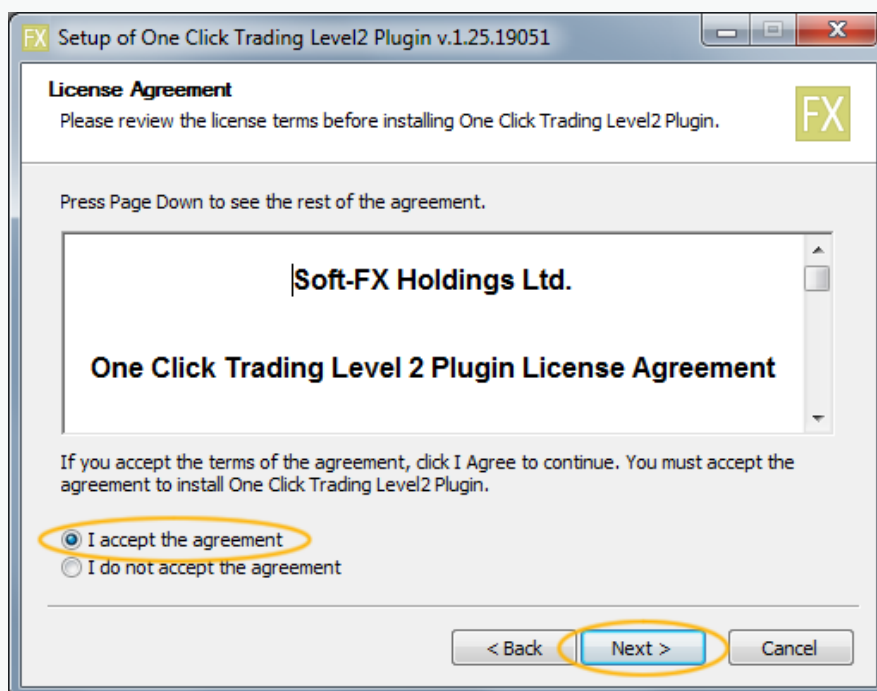
## One Click Trading Level2 Plugin: Installation

1. Run the installation file. In the opened setup window click **“Next”**.

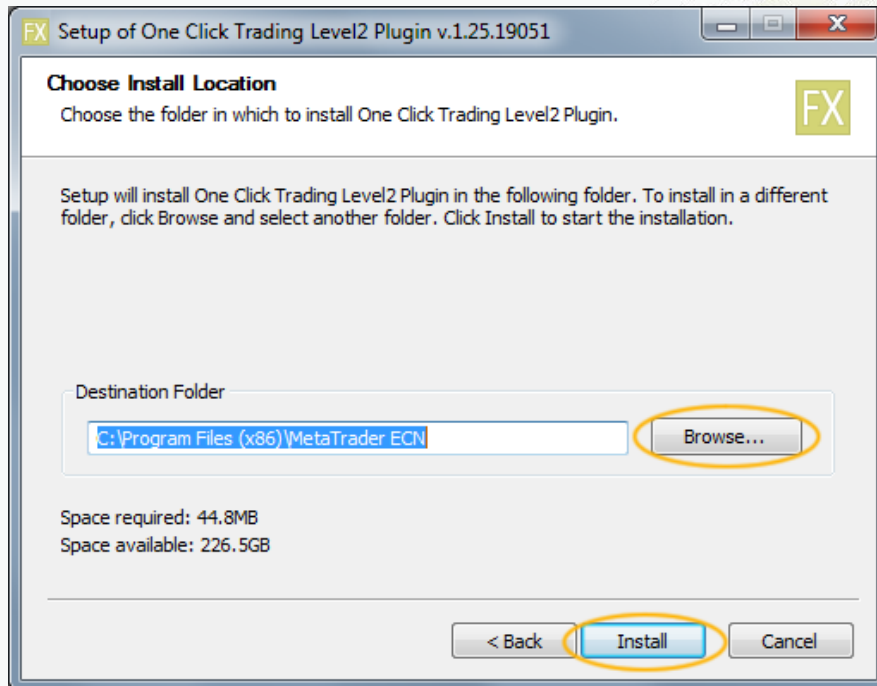
*Please note that you are recommended to close all running applications before installing the program (including all the MT4 terminals).*



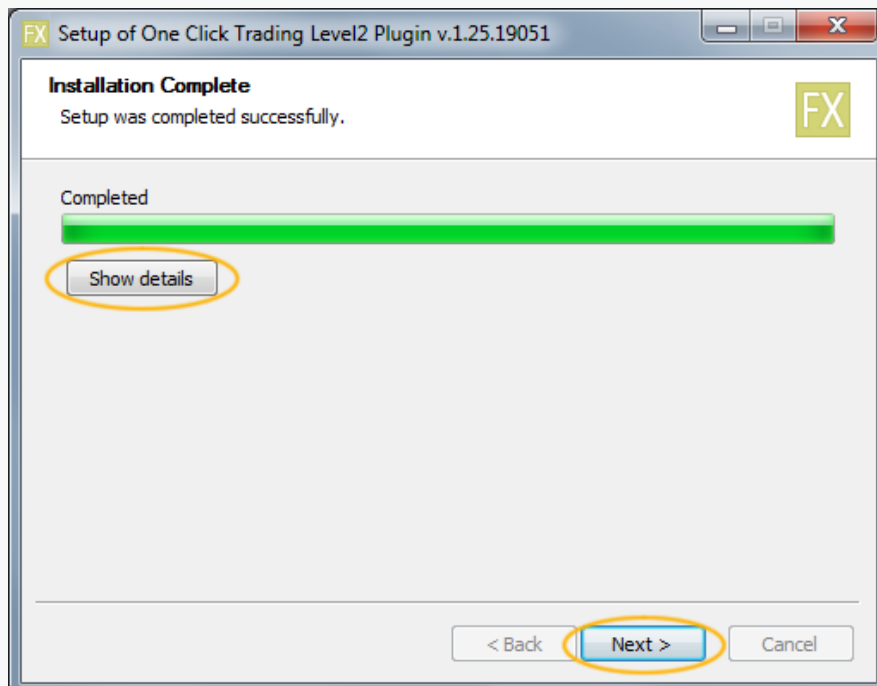
2. Get acquainted with the license agreement. If you accept the terms of the agreement, confirm it by choosing an option button next to **“I accept the agreement”** and click **“Next”**.



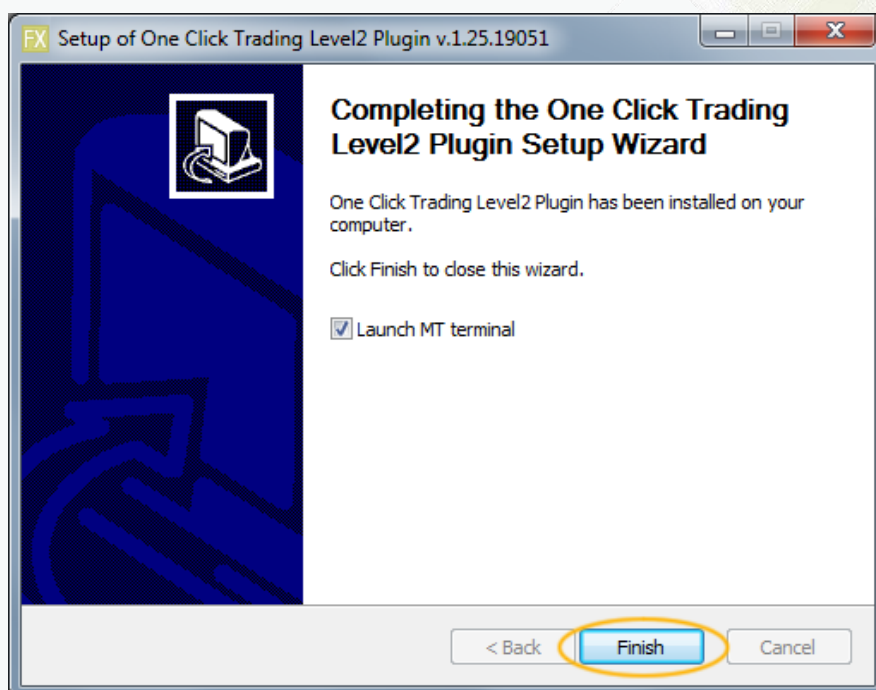
3. Plugin should be installed to the same folder as the MetaTrader 4 platform. To choose the correct directory one has to click **“Browse”**. Click **“Install”** button to start the installation process.



4. A progress bar will appear on the computer screen, indicating that installation process has begun. When the installation is complete, the **“Next”** button will become active. To view the installation log-files click **“Show details”** button.



5. To finish the program installation and quit the installer click the **“Finish”** button. If you leave the **“Launch MT terminal”** option checked then corresponding MT terminal will be launched after clicking **“Finish”**.

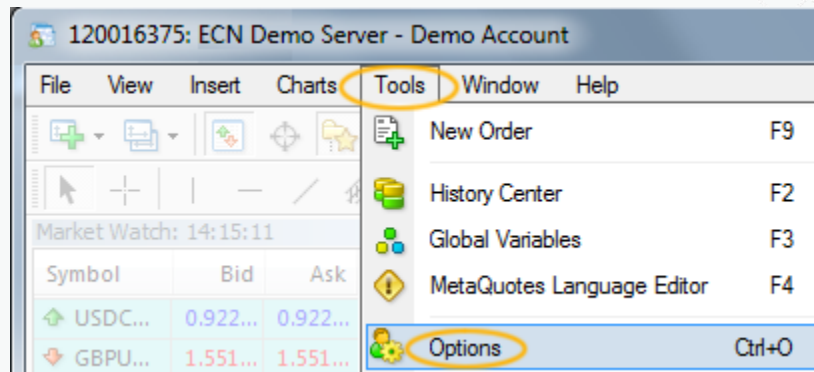


## One Click Trading Level2 Plugin: Activation

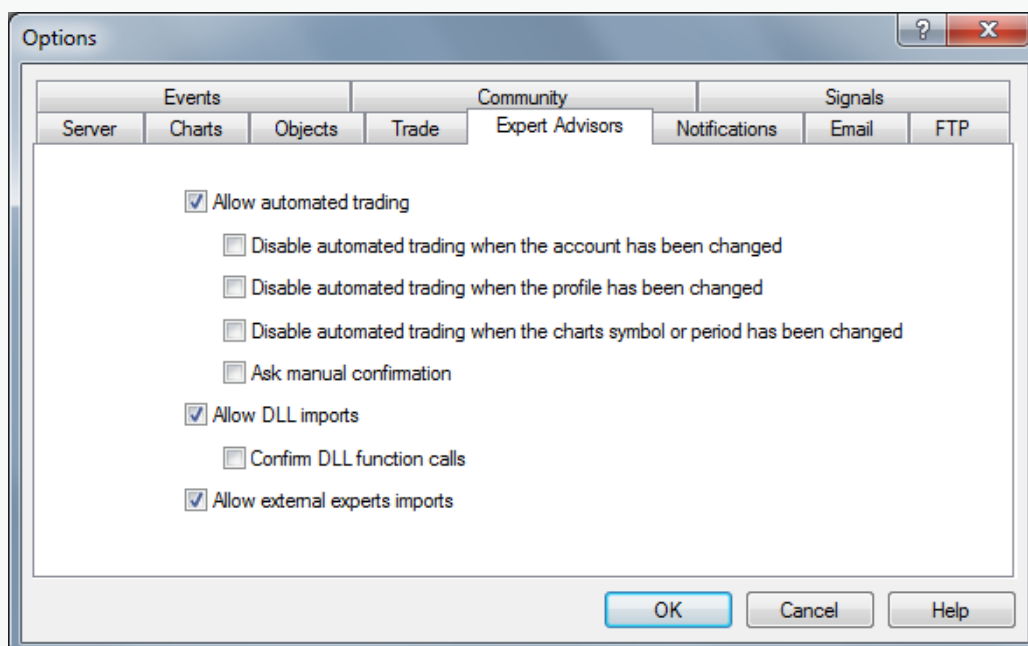
1. Check your settings before activating OCTL2P!

Run the MT4 platform;

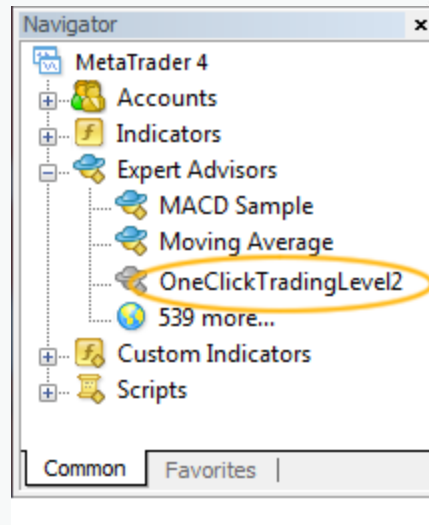
In the **Menu bar**, click the **Tools** menu, and then click **Options**.



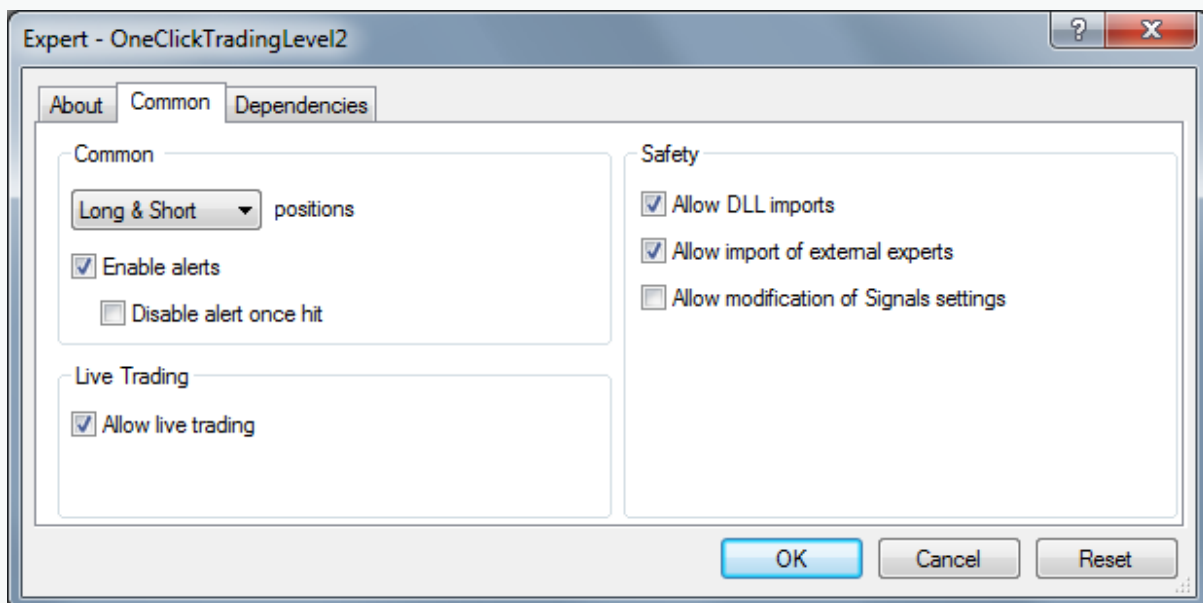
In the opened window choose the **Expert Advisors** tab, select “**Allow automated trading**” and “**Allow DLL imports**” check boxes and click “**OK**”.



2. To activate the Expert Advisor in the **Navigator** window, click **Expert Advisors**. Installed EA should be seen in the list. Double-click on **OneClickTradingLevel2** or simply drag and drop it onto the chart.



In the opened window choose the **Common** tab, select “**Allow live trading**” and “**Allow DLL imports**” check boxes and click “**OK**”.

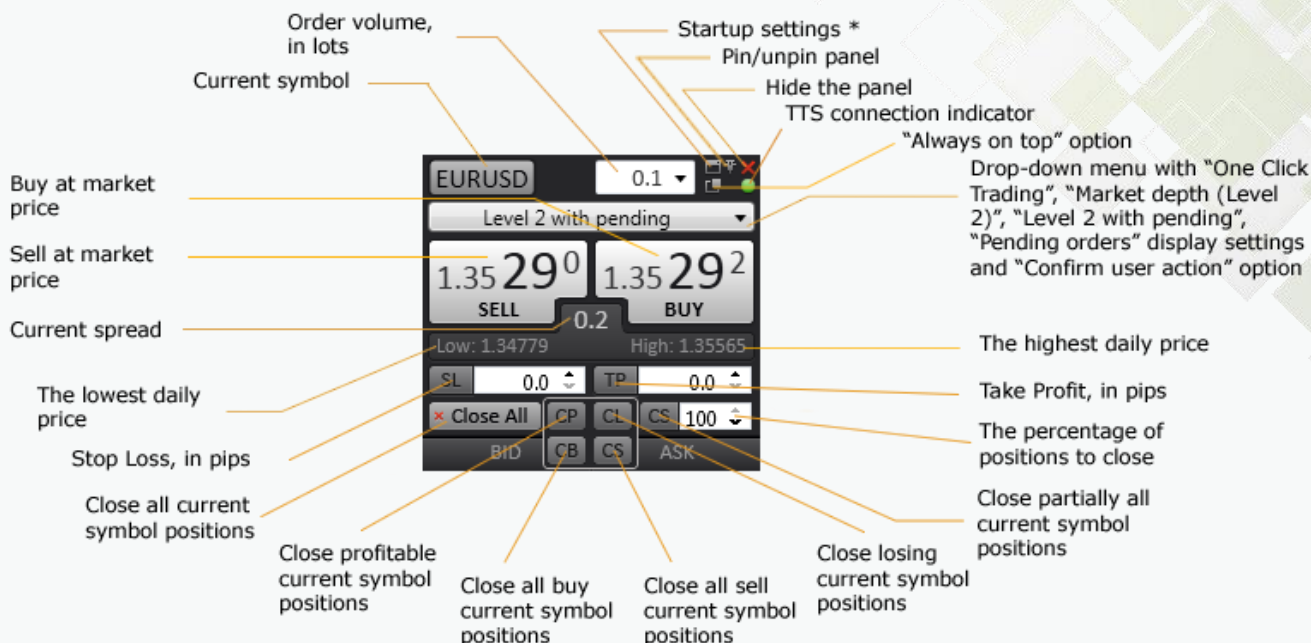


If the EA is activated successfully, a smiley will be seen in the right top corner of the chart.

# One Click Trading Level2 Plugin: Overview

**Please note!** All operations in the OCTL2P are performed only by the Current symbol.

## 1. Main section



"Close partially all positions" – that action will close for every position the percentage set in the "Percentage of positions to close" field.

"One Click Trading" – only the main section is displayed.

"Market depth (Level 2)" – only the main and the Market depth sections are displayed.

"Level 2 with pending" – all the 3 sections of the plugin are displayed.

"Pending orders" - only the main and the Pending orders sections are displayed.

"Confirm user action" – in case you've selected this option the confirmation window would appear every time you press sell/buy buttons or want to create/close orders preventing accidental actions.

"Always on top" – when this option is selected the panel is displayed on top of all opened windows (the panel should be unpinning and MT4 should not be minimized).

"TTS connection indicator" – indicates the state of the TTS connection:

- green – the connection is stable, the quotes are updated;
- yellow – the connection is stable, the quotes were updated more than 1 minute ago;
- red – no connection. Check the settings at the Connection Demo or Connection Live tab (depending on the type of your account). If the settings are correct there are temporary problems with the TTS. However operations that don't require the TTS connection can proceed if there is the MetaTrader Server (MTS) connection.

**Note!** Margin and margin level are calculated only when there is TTS connection. When TTS connection indicator is red, margin and margin level turn red as well; it means that a client sees the last calculation value before the server connection has been lost.

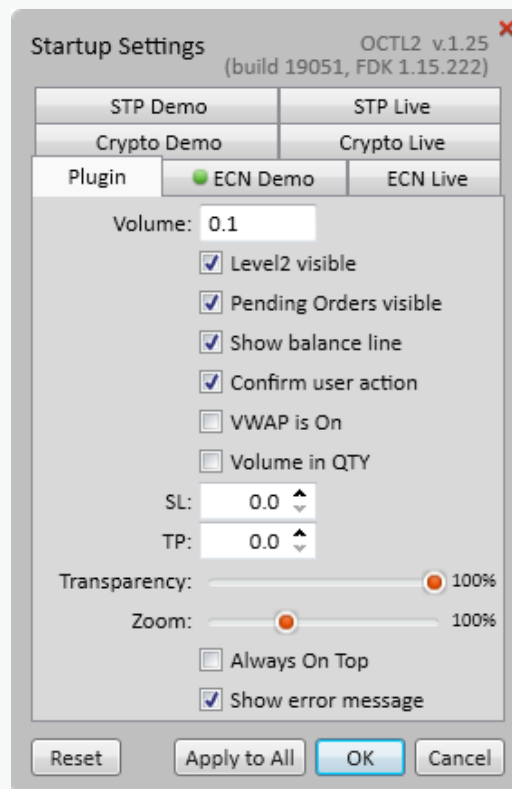


You can modify Stop Loss and Take Profit (SL/TP) levels using chart lines by double-clicking on them and dragging. If you set invalid SL/TP level it will automatically be changed to the last valid one and in the Experts tab of the Terminal window will appear the error message.

### **\*Startup settings**

OCTL2P will start up with this setting regardless of the changes you make in the OCTL2P window.

### Plugin tab



“Transparency” - customize transparency of OCTL2P window.

“Zoom” – change the size of OCTL2P window.

“Reset” - the button resets the settings to the default.

“Apply to All” – the button changes the settings for all opened OCTL2Ps.

“Show error message” – if MT rejects the operation the message window that specifies the reason is displayed.

Connection Demo/Live tabs

Startup Settings OCTL2 v.1.25 (build 19051, FDK 1.15.222)

STP Demo	STP Live	
Crypto Demo	Crypto Live	
Plugin	ECN Demo	ECN Live

Depth of market:

Address:

Port:

Login:

Password:

Symbol postfix:

The number of tabs depends on the types of accounts supported by the broker's server.

“Depth of market” – the number of best bid/ask positions shown in the Market depth section.

“Address” – the address of the tick trader server (TTS) that provides the depth of market data.

“Port” – the port for connection.

“Login” – TTS login.

“Password” – TTS password.

“Symbol postfix” – specifies the symbols' postfix to subscribe and receive from TTS (e.g. “\_STP” to receive the STP symbols to trade on STP accounts).

## 2. Market depth (Level 2) section



VWAP off – the SELL/BUY buttons show the best current prices at the market

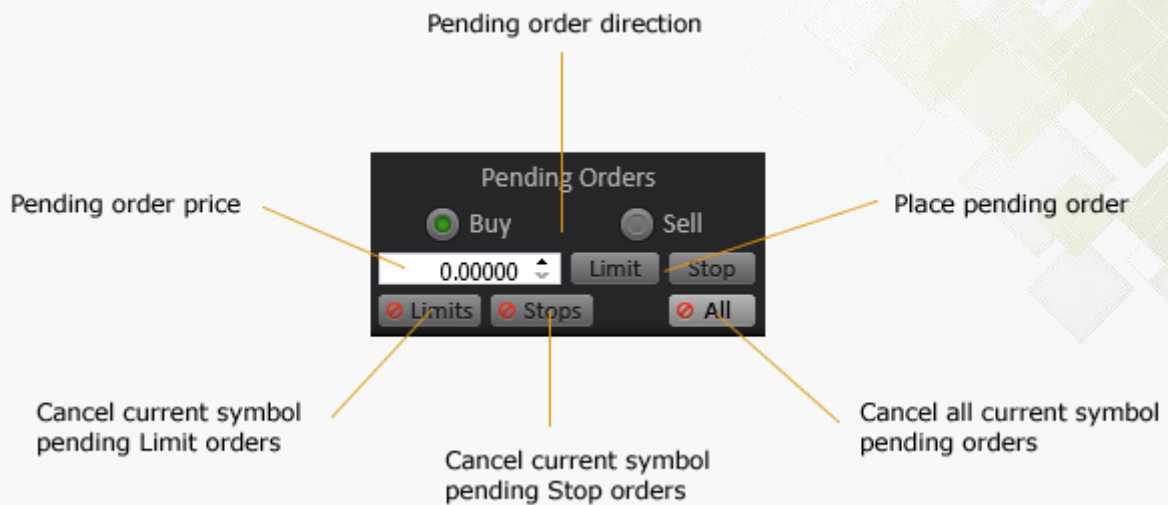
VWAP on – the SELL/BUY buttons show the best prices depending on your Order volume

**Please note!** The value-weighted average price (VWAP) is indicative. The actual price for closing and opening the trade may differ from prices shown in depth of market (Level2).

\* Price bands are colored green when the difference between prices' high-order digits is 1 or greater e.g. the 1<sup>st</sup> best bid price displayed is 804.494 and the 2<sup>nd</sup> best bid price is 803.279 so the 2<sup>nd</sup> best bid price band is colored green.

Full price tooltip is displayed when the price band is hovered over with the mouse.

### 3. Pending orders section



### 4. Balance line

BP/SP	B/S SWAP	BAP/SAP
10,000	-0.79	1.28806
10,000	-0.53	1.28805
Margin	Margin Lvl	P/L
128.81	38,542.02%	-1.42

Callouts for the table:

- 1:** Buy Position/Sell Position (by current symbol)
- 2:** Buy SWAP/Sell SWAP
- 3:** Margin
- 4:** Total profit (by current symbol)

**1** in base currency units or in lots (depending on Lots/Qty switch).

**2** a) in currency of the trader's account for the total volume opened;  
b) on Wednesday triple swap values are displayed.

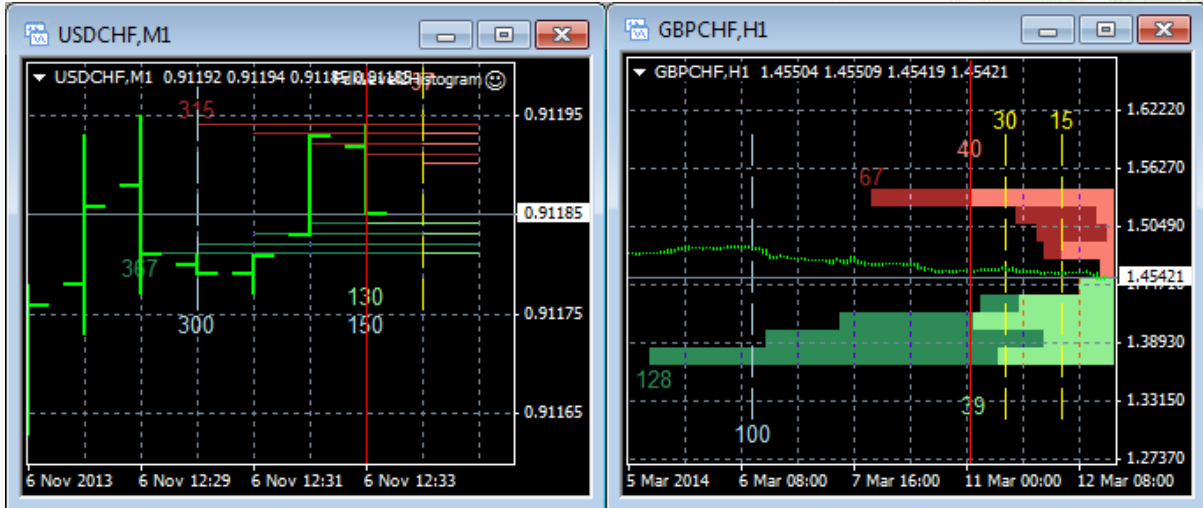
**3** The margin value on open orders in the Click Trading Level2 Plugin can slightly differ from the margin value on open orders in MetaTrader 4.

For TRUE ECN accounts the margin indicated in One Click Trading Level2 is considered a sum of margin requirements for both open and pending positions.

**4** in currency of the trader's account.

## One Click Trading Level2 Plugin: Histograms

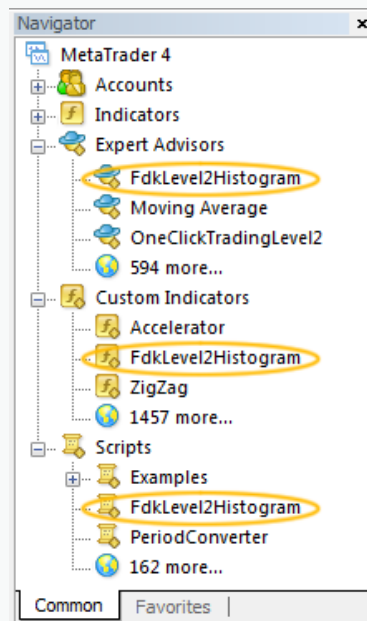
OCTL2P install pack also includes a Histogram Advisor, a Histogram Indicator and a Histogram Script.



Histogram Advisor and Histogram Script show volumes/prices data updated every 100 milliseconds\* while the Histogram Indicator's data are updated every 1 second\* or on MetaTrader Server (MTS) tick.

\* The time frame can be changed by user in the code of corresponding file.

**Note!** One chart window can contain only one advisor at the same time. If you want to use Histogram Advisor and OCTL2P simultaneously you have to open two windows for the same currency pair.



To activate the histogram double-click on it in the **Navigator** window or simply drag and drop it onto the chart. The settings window will appear. Make sure that all the **Allow...** check-boxes at the **Common** tab are checked. At the **Inputs** tab you can customize your histogram:

- Level2Depth – the depth of market shown on the histogram.
- VolumeInQTY:
  - o True – volume is shown in quantity of the base currency.
  - o False – volume is shown in lots.
- RealVolumes:
  - o True – real volume mode. Shows the actual volumes stacking the bands one to another without binding to price scale.
  - o False – real price mode. Shows the volume bands bound to price scale. Volume bands can be aggregated using actual L2 and therefore differ from 'real volume' bands.
- MaxRequestVolume – specifies the L2 volume that will be used as the horizontal size of the histogram. The default value – 0.00 – means that the biggest current volume will be used as the horizontal size of the histogram.
- HistoBarSizeInPerc – the horizontal size of the histogram against the width of the chart (%).
- HistoBarThicknessInPixel – the vertical size of the histogram's bars (for 'real volume' mode only; 'real price' bands are always 1 pixel height).

Also you can change the colors of the histogram. By default the light sections of the bars show real volumes and the dark sections of the bars show cumulative volumes.

Histogram also includes:

- Yellow and grey vertical dotted lines – scale marks; yellow - non-cumulative volumes, grey - cumulative volumes.
- Bands' numbers – show max non-cumulative ask/bid volumes available (by default – light red/green numbers) and max cumulative ask/bid volumes available (by default – dark red/green numbers).
- Vertical red line – allows changing the horizontal size of the histogram (HistoBarSizeInPerc) by double-clicking on it and dragging.